

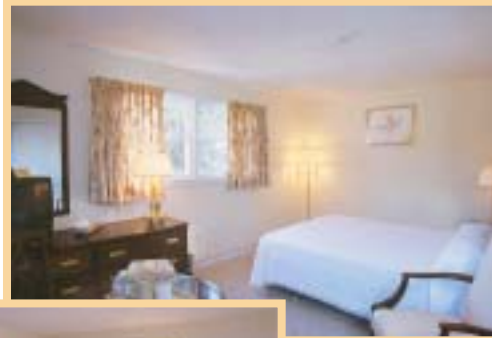
Modern Motel Rooms, Efficiencies, Cottages and Main House

All rooms and cottages include air conditioning, telephone, color cable television and private bath.

The Main House

Motel Rooms

are located in buildings A and B. Upper floor rooms and sitting areas have a distant ocean view.



Our motel rooms offer a choice of double, queen or king size beds.

Efficiencies are located in Building B. These units include a living room with sleep sofa, bedroom and modern kitchen.

Cottages

are located throughout the upper portion of the property. All are newly renovated with full kitchens, which are fully equipped for your vacation or getaway. Choose from one or two bedroom cottages, all with either a porch or private deck. All cottages are just a short walk from the pool, and include telephone, A/C, color cable television with VCR, and private bath.



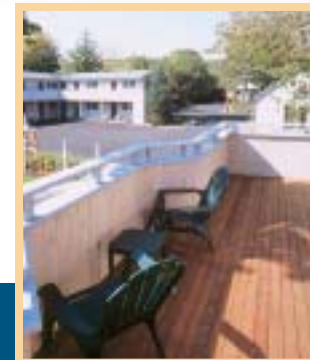
Choose from one or two bedroom cottages. Each has a deck or porch.



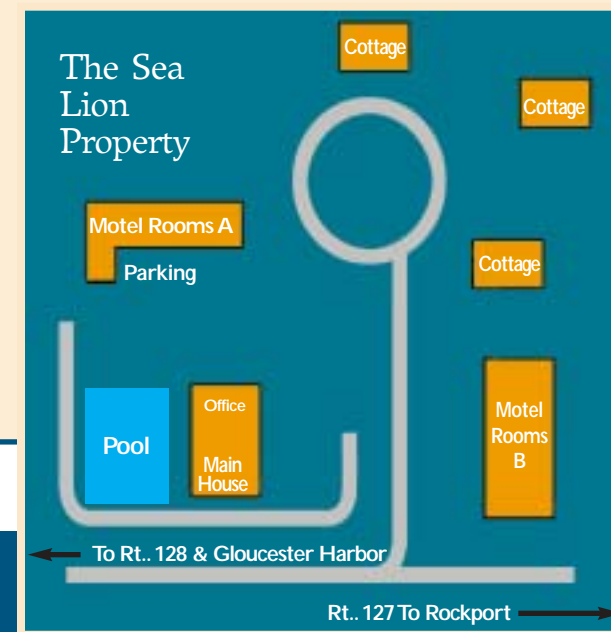
Kitchens are modern and fully equipped.



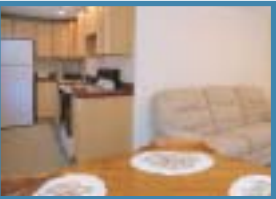
Building B Upper Deck



Building B Upper Deck View



The Main House offers 3 deluxe rooms with ocean views, decks and other special features. Please inquire for more information.



SEA LION MOTEL & COTTAGES

138 Eastern Avenue · Scenic Route 127
Gloucester, Massachusetts 01930
978-283-7300 · www.sealionmotel.com

Directions: Take Route 128 north to Gloucester. To not take any Gloucester exits, just continue on straight until you come to a rotary (traffic circle). Go half way around the rotary and continue on Route 128 north to a second rotary. On the second rotary, again go halfway around and continue on 128 north to a set of lights. Turn left at the



lights onto Eastern Avenue, Route 127 toward Rockport. From this point we are approximately 7/10 mile ahead. You will pass a Dunkin Donuts and a Shaw's grocery store on the right. After passing Shaw's, the Sea Lion is just ahead on your left.